

# Science & Technology

**Industry**

Adax  
AESA Cortaillod  
Alfa Romeo  
Basin  
Ciposa  
CSEM  
Dumont Tools  
Dupraz  
Egis  
Eli 10  
Eligreen  
EM Microelectronic  
ETA Manufacture  
Felco  
Fiat  
Fleurier Ebauches  
Groupe E  
Guillod Gunther  
Lancia  
Microcity

Mikron  
Reuge Musique  
SIE  
Smile line  
Swiza  
TVT  
Viteos  
Vitrocsa  
Wenger

**Technology**

Balluun  
Be Smart  
Compaz  
Connectcom  
E-media  
Eyra  
FKG Swiss Endo  
Inhotec  
Interwage  
K&K ingénieurs  
Mezeroe  
Microcity  
NID  
Omnicom  
PetroMarker  
Robert Laminage  
SoSoftware  
Symbios  
Symetis  
TRS  
Uditis

**Health**

CCCP Coordination psychiatrie Vaud  
CPNVD Centre de psychiatrie du nord vaudois  
CHUV Département de psychiatrie  
CNP Centre neuchâtelois de psychiatrie  
Fondation de Nant

**Lifesciences**

BioAlps  
Biolsrael  
Celgene  
Diamed  
GeneProt  
Pharmalicensing  
Research Foundation for Medical Devices  
Serono  
Tecan

**Medical**

HNE Hopital neuchâtelois  
Hôpital du Valais  
Mon Dossier Santé





# GRAND OPENING DOORS

Enorme succès pour l'inauguration  
de Microcity, nouveau fleuron de  
la microtechnique neuchâteloise !

L'inauguration officielle du bâtiment Microcity sur le Pôle d'innovation – Neuchâtel s'est tenue le 8 mai en présence de nombreux représentants des milieux politiques, économiques et académiques. Le canton de Neuchâtel joue un rôle majeur dans ses domaines d'excellence. L'implantation de l'EPFL en terres neuchâteloises vient renforcer le réseau de compétences microtechniques et contribue au rayonnement du canton au niveau national et international.



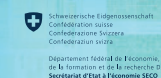
## M I C R O C I T Y

### NEUCHÂTEL ACCUEILLE L'EPFL DANS LE NOUVEAU BÂTIMENT «Microcity»

**ne.ch**  
RÉPUBLIQUE ET CANTON DE NEUCHÂTEL

PORTES OUVERTES  
ANIMÉES PAR:  
EPFL, NEODE, ERNE – BAUART  
—  
10 MAI 2014 – 10h à 17h  
—  
Maladière 71  
2002 Neuchâtel

AVEC LE SOUTIEN DE:



[WWW.MICROCITY.CH](http://WWW.MICROCITY.CH)

ACCÈS AU SITE

TRANSPORTS PUBLICS:  
LIGNE 101 – ARRÊT GIBRALTAR-CPLN

VOITURE:  
PARKINGS DE LA MALADIÈRE  
ET DU NID-DU-CRÔ

PÔLE D'INNOVATION - NEUCHÂTEL



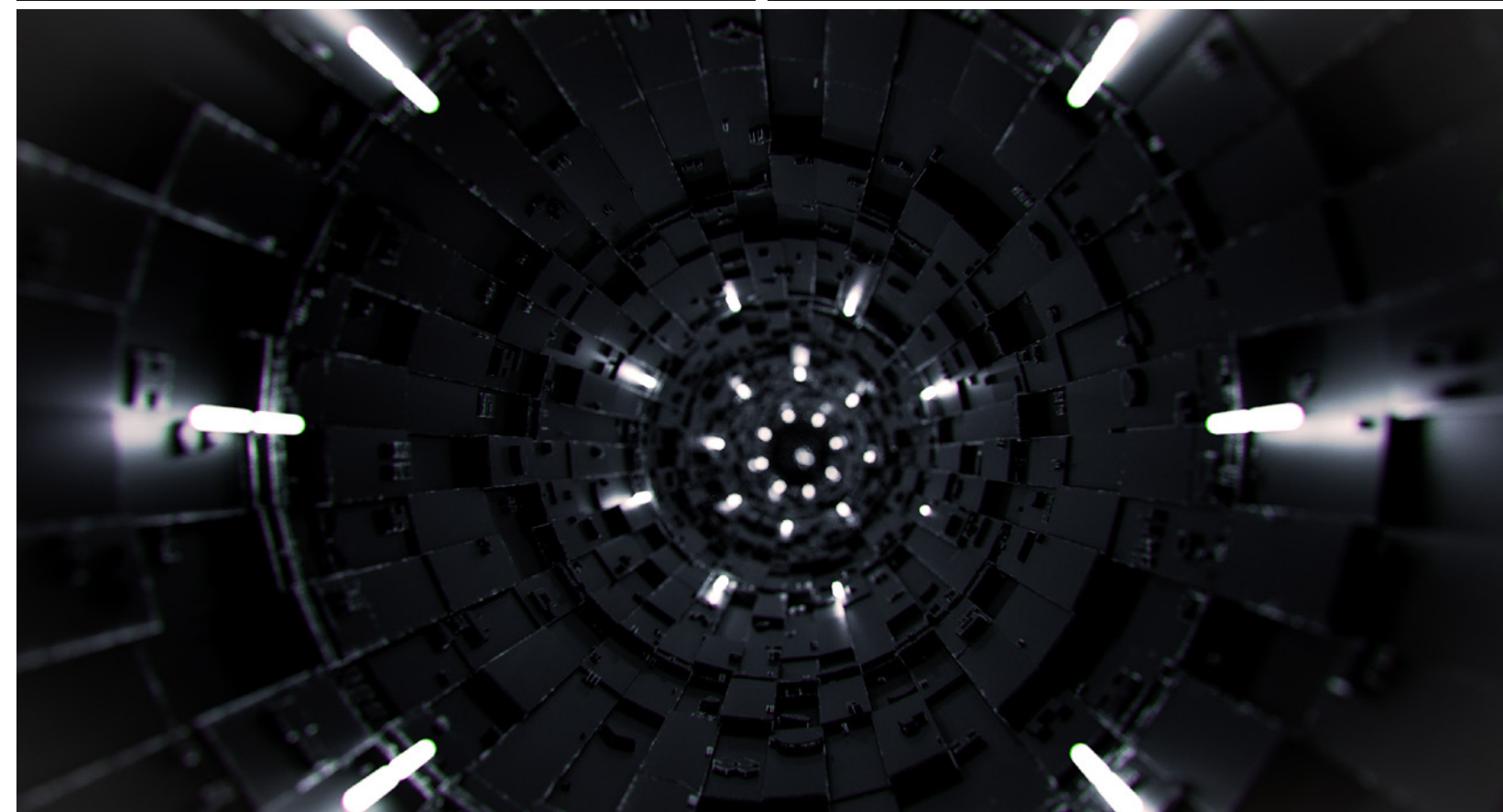
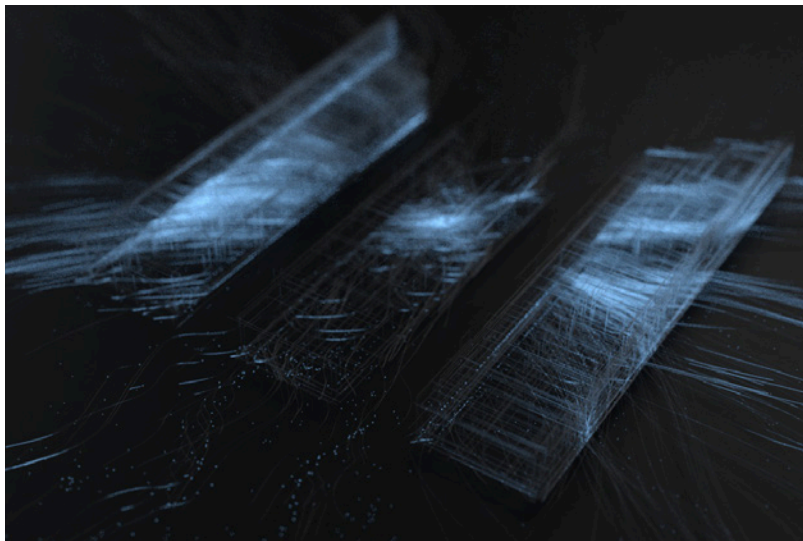
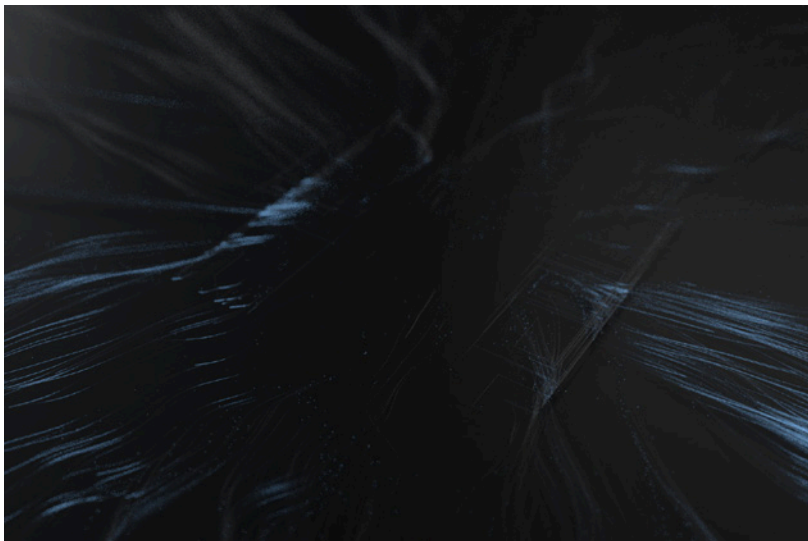
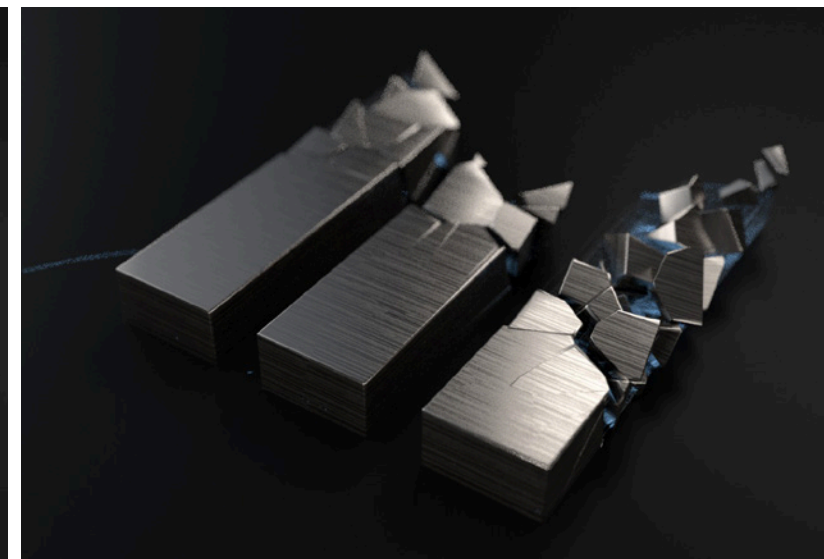






MIKRON

# MICRO PARTICLES



## IMMERSIVE EXPERIENCE







empowering  
everything connected



embodying  
user experience

Before

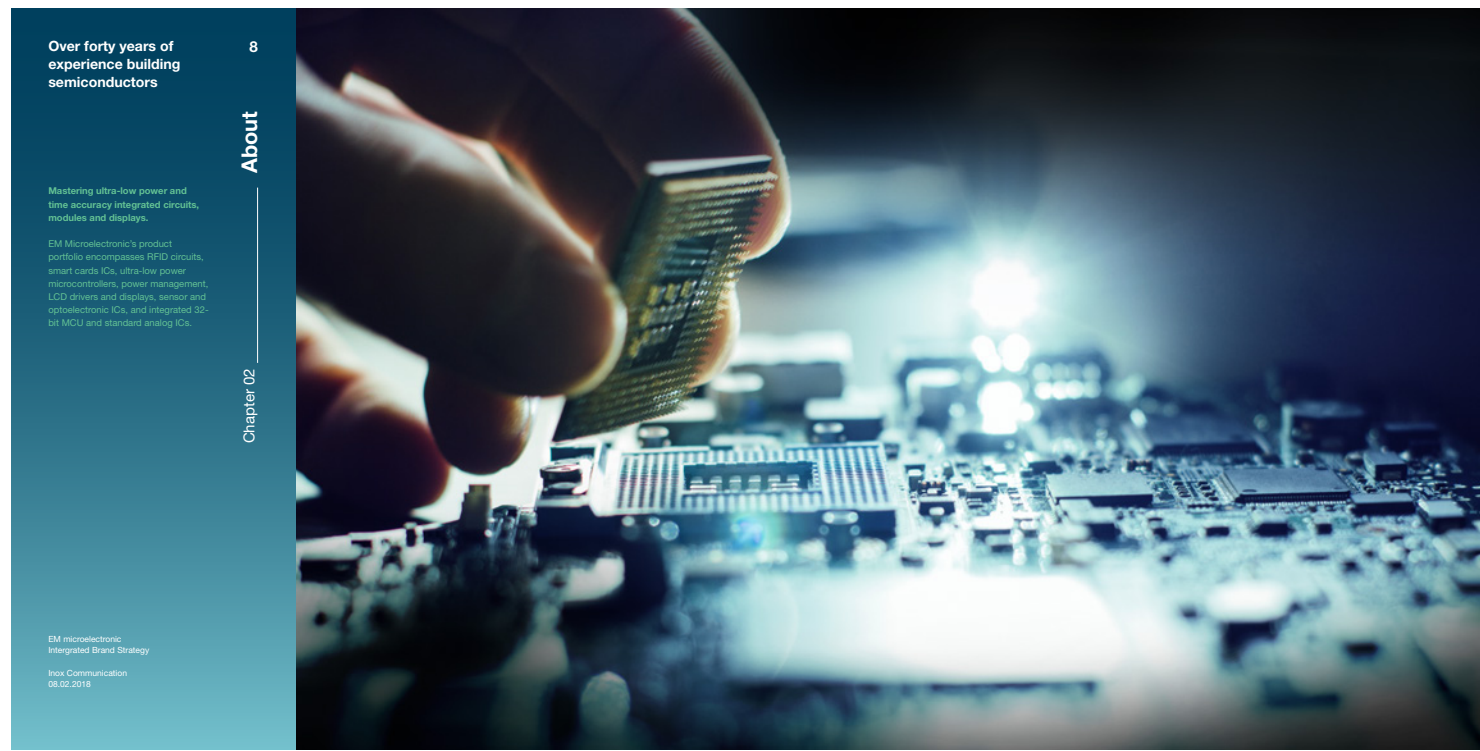
After



EM MICROELECTRONIC



em microelectronic



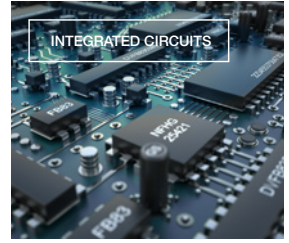
Over forty years of  
experience building  
semiconductors

8

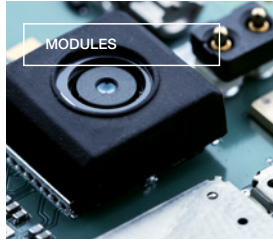
About  
Chapter 02

Mastering ultra-low power and  
time accuracy integrated circuits,  
modules and displays.

EM microelectronic  
Integrated Brand Strategy  
Inox Communication  
06.02.2018



INTEGRATED CIRCUITS



MODULES



DISPLAYS



Leader in ultra-low  
power, low voltage  
management

9

About  
Chapter 02

Power management and  
energy performance  
Energy harvesting  
Energy storage  
Power management  
Power supply

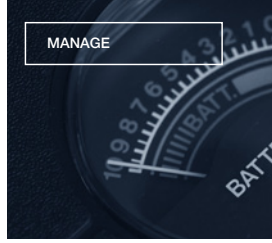
EM microelectronic  
Integrated Brand Strategy  
Inox Communication  
06.02.2018

emphasizing energy efficiency

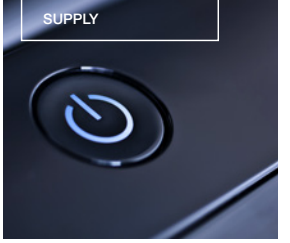
ultra-low power.  
time accuracy.



STORE



MANAGE



SUPPLY



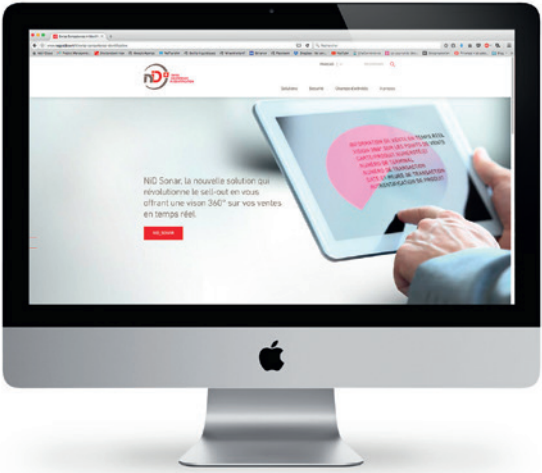


# nID IDENTIFICATION AND DATA PROCESSING

The sharpest Swiss competences  
in personalized identification

## Personalization

L'unité de personnalisation réalise des finitions uniques à partir des données clients. Ce service travaille avec un programme spécifique et adapté au langage bancaire. Il gère dans les meilleures conditions et avec un haut niveau de sécurité des données sensibles en toute confidentialité.





compáz

# ART SCIENCE SOCIETY

Working towards  
a better world through  
Art and Science



When billboards  
provide energy

By offering a new perception of solar energy, compáz will in time contribute to an increase in architectural solutions that integrate photovoltaic systems. It also enables other uses such as in advertising. Compáz aims to promote the use of renewable energy and to make this energy an integral part of our daily lives.

compaz.art



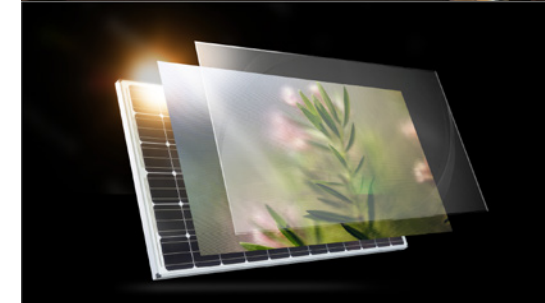
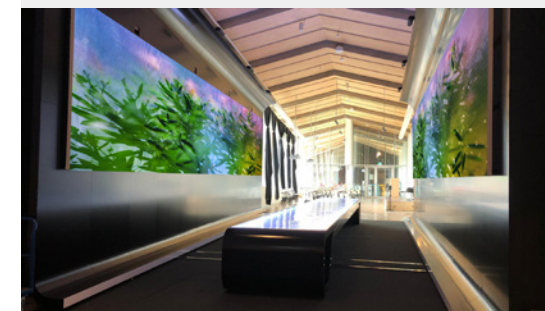
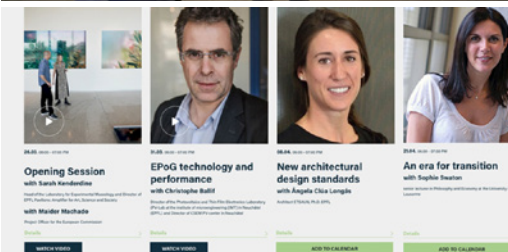




The Be-Smart project has received funding from The European Union's Horizon 2020 research and innovation programme under grant agreement No 818009.

## Promouvoir le potentiel du photovoltaïque comme matériau de construction

L'Union européenne a fixé des objectifs ambitieux en matière de climat et d'énergie. Pour contribuer à ce tournant énergétique, les technologies photovoltaïques intégrées aux bâtiments (BIPV) joueront un rôle important, notamment dans les villes et les zones urbaines. Le projet Be-Smart contribue à la mise en œuvre des politiques de bâtiments à énergie zéro et à la promotion du BIPV.



### Arena Magasin X Uppsala, Sweden by White Arkitekter for Vasakronan

Magasin X in Uppsala, Sweden takes large-scale construction to new levels of sustainability. The office building, with its solid wood frame, is the country's largest wooden office building. Framed by slats, generously proportioned windows let daylight deep into the offices. On the most sunlit facades, windows are separated by solar panels that generate shade as well as electricity. The panels' dimensions optimize the placement of solar cells to avoid 'dead' (inactive) areas, and the frosted glass surface smoothens the appearance. Aligning them to the colour and texture of the surrounding materials. The modern wood construction, along with the slats and solar cells on the roof and facade, contribute to a building with an impressively low carbon impact.

EXPLORE



### Queens Ingrid's garden Oslo, Norway by Oslobygg KF

Ingrid's Garden is an innovative garden-town whose main focus is to let individuals with cognitive impairment the opportunity to live as normally as possible within a safe framework. Oslobygg KF is a leader in the development, construction and management of energy-efficient buildings with optimal environmental profiles and Queens Ingrid's Garden is no exception: the emphasis is on innovative and suitable applications of welfare and smart home technology, using a dense climate shell and good technical facilities in combination with highly efficient energy wells. The building is adapted for local energy production, with solar cells on roofs in combination with Sedum plants, a gable roof and Oslobygg's solar cell initiative along with the EPoG panels received through the EU Be-Smart initiative.

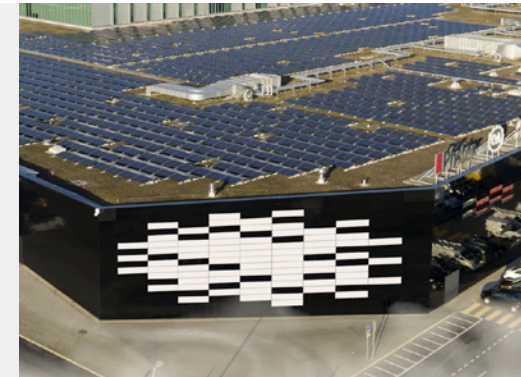
EXPLORE



### Migros Marin Centre Neuchâtel, Switzerland by Immoroc

Integrate on an existing building, black and white solar panels into an impressive 300 square metre mural, demonstrates the great capacities of EPoG technologies and design to complement the architecture. The black metallic aluminium panel facade has been turned into EPoG power station.

EXPLORE



### Figli del Sole Oliveri, Italy Art-Science Exhibition at EPFL Pavilions by Compaz

Figli del Sole (Children of the Sun) is a permanent exhibition in the community of Oliveri, Sicily, displaying portraits of local residents, which are intriguingly integrated into photovoltaic panels and displayed in a public park in Oliveri. The subjects - men, women, and children of the community - reflect the diversity of Oliveri, which is part of the Sicilian city of Messina. The technology behind this exhibition is the result of four years of development advanced by the consortium and its partners, which created different techniques to add striking aesthetics to the solar panels. Thanks to these innovations, solar technologies can now be artfully integrated into the facades of buildings or displayed on the streets. The exhibition also fulfils an essential role as a test platform for these innovative technologies, in particular conditions of the Mediterranean basin under high temperature, humidity and air salinity.

EXPLORE



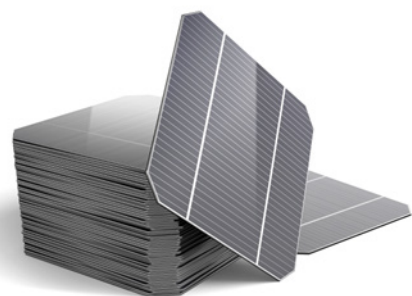
### Watt is Art Lausanne, Switzerland Art-Science Exhibition at EPFL Pavilions by Compaz

Pavilions Visitors to the Watt is Art Exhibition are introduced to the concept of using energy-positive glazing (EPoG) in the construction of new buildings. These innovative photovoltaic solar panels offer some of the essential qualities - like soundproofing and insulation - associated with traditional building materials but they are also aesthetically compelling. With almost unlimited design possibilities, energy-positive glazing gives architects and builders a broad palette and allows them to match their projects to the environment. And, of course, they also produce energy. The displays and presentations at the Exhibition are compelling but real-world examples demonstrate the EPoG concept vividly.

EXPLORE



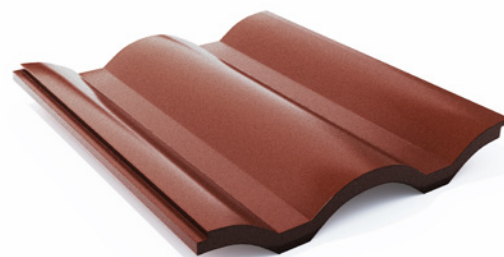
## From BIPV to Energy Positive Glazing **EPoG**



From traditional PV...



to BIPV as Building Envelope Construction Material







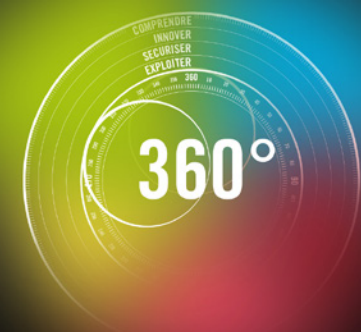
INFORMATION TECHNOLOGIES  
AND SECURITY



## UNE NOUVELLE ÈRE DANS LES TECHNOLOGIES DE L'INFORMATION ET LA SÉCURITÉ

[WWW.EYRA-GROUP.CH](http://WWW.EYRA-GROUP.CH)

Acteur reconnu en Suisse romande, la société ALTEA challenge le marché romand des technologies de l'information en créant Eyra Group. Par le développement et l'acquisition de compétences à 360°, ce dernier ambitionne de devenir le leader du marché de l'IT en proposant une approche résolument tournée vers les besoins des clients.



|                       |  |
|-----------------------|--|
| IT BUSINESS SOLUTIONS |  |
| CYBER SECURITY        |  |
| CLOUD SOLUTIONS       |  |
| IT TALENT MANAGEMENT  |  |
| TECHNOLOGY RESELLER   |  |



MARK A NEW ERA  
IN INFORMATION  
TECHNOLOGIES

IT BUSINESS  
SOLUTIONS

CONSULTING &  
PROFESSIONAL SERVICES  
OUTSOURCING &  
MANAGED SERVICES

CLOUD  
SOLUTIONS

ADAPTIVE CLOUD  
SWISSCLOUD

IT TALENT  
MANAGEMENT

IT TALENT ON DEMAND  
IT TALENT RECRUITMENT

CYBER  
SECURITY

BUILD DIGITAL TRUST FOR  
YOUR BUSINESS

TECHNOLOGY  
PROVIDER

TECHNICAL SOLUTIONS  
DEVICES AS A SERVICE







GET RID OF  
WORRIES,  
NOT POWER

## RENEWABLE ENERGY STORED IN AN INTELLIGENT WAY

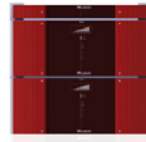
We offer modular high-end storage solutions for photovoltaic installations. Ranging from stand-alone up to professional, scalable 19" rack solutions, customers can find energy storages that are designed to optimise and increase the private consumption of generated renewable energies.



The TiBox achieves at room temperature with its lithium-titanate technology at 3.2 kWh a service life span of at least expected 20 years at 15,000 cycles and 100% DoD. The battery modules available for the market fulfil the respective safety and application standards and are certified accordingly.

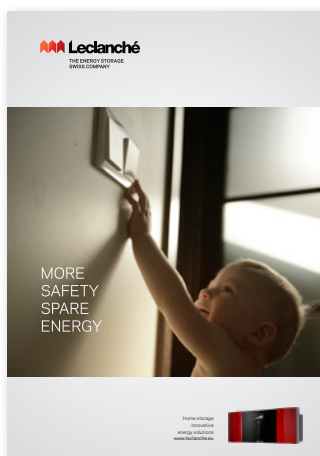


Contact us for more informations



This database contains the ongoing typical information specific to products manufactured at the time of this publication and does not constitute a guarantee or warranty. Performance and service life depends on the operating temperature, storage conditions, cut-off voltage and load applied in a specific application.

It is the responsibility of each user to ensure that each application is adequately designed in terms of safety and usage conditions, and is in accordance with existing standards and requirements. Specifications are subject to change without notice.

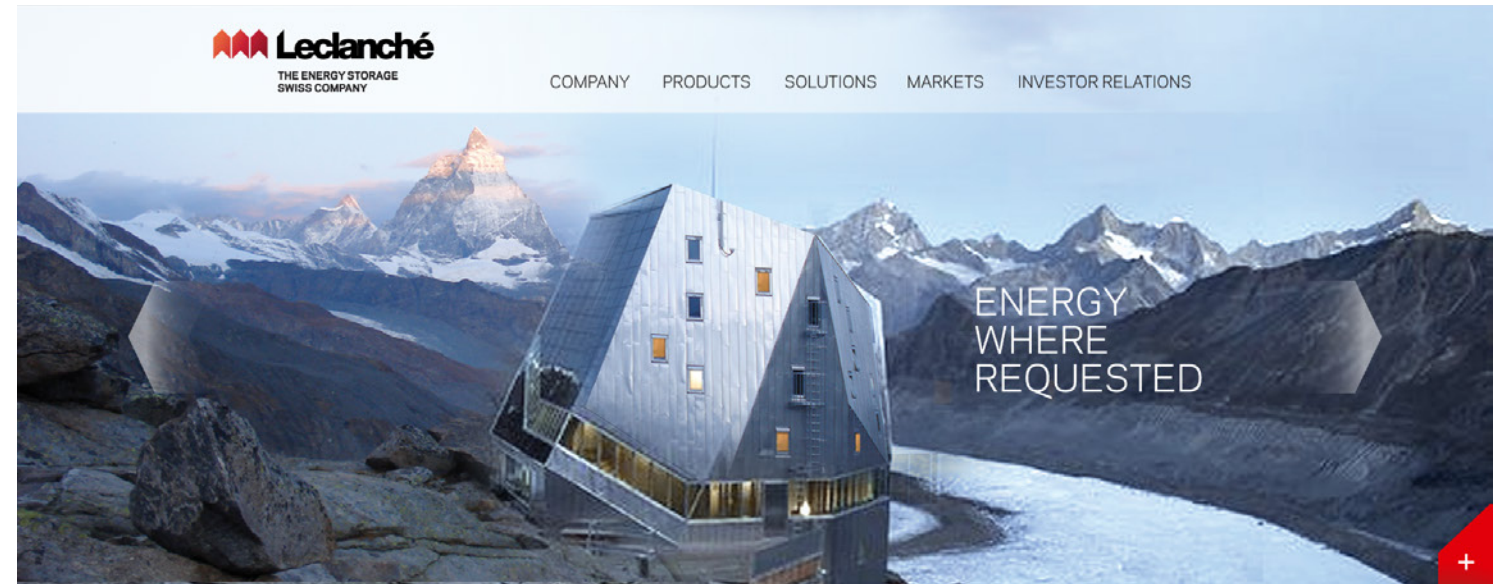


MORE  
SAFETY  
SPARE  
ENERGY



FROM KILOWATT TO MEGAWATT  
ALWAYS THE RIGHT SOLUTION

| OVERVIEW   |                  |                  |                  |                  |
|--|------------------|------------------|------------------|------------------|
| INDUSTRIAL STORAGE                               | IS 25            | IS 50            | IS 75            | IS 100           |
| BATTERY TECHNOLOGY (LITHIUM-TITANATE TECHNOLOGY) |                  |                  |                  |                  |
| NOMINAL CAPACITY                                 | 25kWh            | 50kWh            | 75kWh            | 100kWh           |
| NOMINAL POWER                                    | 25kW             | 50kW             | 75kW             | 100kW            |
| PEAK POWER                                       | 50kW             | 100kW            | 150kW            | 200kW            |
| NOMINAL VOLTAGE                                  | 250V AC 50/60 Hz | 250V AC 50/60 Hz | 250V AC 50/60 Hz | 250V AC 50/60 Hz |
| CONTAINER STORAGE                                | CS 200           | CS 500           |                  |                  |
| BATTERY TECHNOLOGY (LITHIUM-TITANATE TECHNOLOGY) |                  |                  |                  |                  |
| NOMINAL CAPACITY                                 | 200kWh           | 500kWh           |                  |                  |
| NOMINAL POWER                                    | 200kW            | 500kW            |                  |                  |
| PEAK POWER                                       | 400kW            | 1,000kW          |                  |                  |
| NOMINAL VOLTAGE                                  | 250V AC 50/60 Hz | 250V AC 50/60 Hz |                  |                  |
| SIZE   | 20' x 8' x 8'    | 40' x 8' x 8'    |                  |                  |



ENERGY  
WHERE  
REQUESTED



### HIGH CAPACITY LITHIUM-ION BATTERY

The core of our energy storage solutions are our lithium-ion cells. They are characterised by high safety and long service life. The patented separator technology guarantees that our large format cells have high safety.



### STATIONARY STORAGE SOLUTIONS FOR INDUSTRY

An adequate local storage possibility smoothens peaks, saves money, in order for power, generated by wind and sun, to be used as efficiently as possible large energy storages are employed.



### HOME STORAGE INNOVATIVE ENERGY SOLUTIONS

We offer modular high-end storage solutions for photovoltaic installations. Ranging from stand-alone up to professional, scalable 19" rack solutions, customers can find energy storages.



### BATTERY TO GO!

Leclanché goes back to the inventor of the dry battery, Georges Leclanché. Today we have a broad spectrum of products available - but the battery is still the central part of them.



27.02.2014  
R&D Innovation

### PORTABLE BATTERY SYSTEMS FOR ELECTRO-MOBILITY

Mobility will be facing new challenges. A continuous increase in traffic and the consistent protection of our climate have to be managed simultaneously. On the road to environmentally friendly mobility innovative automobile concepts are needed. These also include novel storage approaches. Lithium-ion-cells from Leclanché are interesting for the automobile industry not only because of their performance characteristics. Above all, it is reliability, safety, longevity and environmentally friendly production that distinguish our cells and make them interesting for their use in electric vehicles.



26.02.2014  
New Milestone

### PORTABLE BATTERY SYSTEMS

Our life is becoming more and more mobile and the aids and appliances that determine our quality of life and convenience have to follow this mobility: telephone, computer or health care utensils. It is crucial that we can rely on their use everywhere. But to achieve this mobility ever more efficient energy systems are needed. Also the trend towards increasingly smaller devices still continues. For every application, Leclanché develops and produces energy storages that are characterised by high quality and reliability and that satisfy exactly these needs.

27.02.2014  
SPONSORING

22-24.03.2014  
XTREME VERBIER

Mobility will be facing new challenges. A continuous increase in traffic and the consistent protection of our climate have to be managed simultaneously. On the road to environmentally friendly mobility innovative automobile concepts are needed.





# SYMBIOS

# TIME FOR

# REVOLUTION



SPS® Evolution

20 years

Clinical experience of the original SPS® concept

100%

Survival after 10 years

The SPS® stem, which was first produced in 1993, is based on a globally unique concept directly derived from the 3D Custom technology developed by Symbios.

Since then, highly encouraging clinical experience with Custom stems, in the interim confirmed by results at 15 years<sup>20</sup> on young patients, suggested a potential for significantly improving the standard for cementless stems: this gave rise to the SPS®, which remains to this day the only standard stem entirely designed on the basis of the Custom algorithm applied to the average femoral anatomy of patients.

Since that time, following more than 50'000 implantations and 20 years of clinical experience, the published results<sup>1)</sup> for SPS® confirm the validity of its design and place it among the cementless stems used for reference.

In 2012, Symbios applied an innovative ultimate version of the concept. After 20 years of developing our technological expertise in 3D pre-operative planning, the sophisticated extramedullary design of the SPS® Evolution now allows surgeons to perform the most effective standard reconstruction possible statistically speaking. Thus, being perfectly custom-made for an average anatomy and allowing optimal reconstruction for the average prosthetic centre of rotation, the SPS® Evolution allows surgeons to effectively restore function in the majority of patients, while preserving the simplicity of a standard stem.

HIP

Femoral Implants

HIP

Acetabular Implants

KNEE

Total Prostheses

The image shows two diagrams of the Knee Total Prosthesis. The left diagram, labeled 'CONTROL OF ROTATION', shows the implant with a 'EXTERNAL LATERAL FLARE' for 'EXTERNAL LATERAL FLARE' and a 'METAPHYSEAL FRACTURE' for 'METAPHYSEAL FRACTURE'. The right diagram, labeled 'PERFECTING OF THE RECONSTRUCTION', shows the implant with a '3D ANATOMIC CURVATURE' for '3D ANATOMIC CURVATURE' and a 'SHORT REFINED DISTAL PART' for 'SHORT REFINED DISTAL PART'.

INOX COMMUNICATION PORTFOLIO

SCIENCE & TECHNOLOGY





# EXPAND YOUR MIND

**ADAPTIVE. EASY. SAFE. EFFICIENT.**

**www.fkg.ch/xpendo**



## RETREATMENT

Simplify your retreatment protocol and reduce your operation time

-  **XP-Endo® Chapter**
    - Unique file design and high-speed rotation enhance the efficiency of gutta paste plasticization
    - Improved pretreatment capability and retreatment effectiveness, compared to other single file systems
  -  **XP-Endo® Finisher R**
    - Optimal expansion capacity allows the sensitive tip to abrade root canal walls and dislodge filing material in difficult-to-reach areas.
    - Seamless adaptation for all root canal morphologies
  -  **Exclusive active**
    - Optimal resistance to cyclic fatigue
    - Optimal core diameter (50% taper) improves efficiency in filling material removal, while maintaining superelasticity and extreme flexibility
  -  **Unique design**
    - Reduces remaining root filling material to twice the efficiency of passive ultrasonic irrigation
    - Available in stainless steel cleaning of the root canal, leaving walls cleaner than other available systems

Protocol and more information on [www.fkg.ch/xpendo](http://www.fkg.ch/xpendo)

K. G. &amp; Jean-Claude Roulier

**RACE® EVO**

## THE RACE LEGACY

**SAFE. EFFICIENT. SOFT CONTROL.**  
[www.fkg.ch/race-evo](http://www.fkg.ch/race-evo)

R-Motion®

## RECIPROCATATION REDEFINED

**SAFE. EASY. MINIMALLY INVASIVE.**  
www.fkg.ch/r-motion

# FKG SWISS ENDO

# FRUITS OF INNOVATION



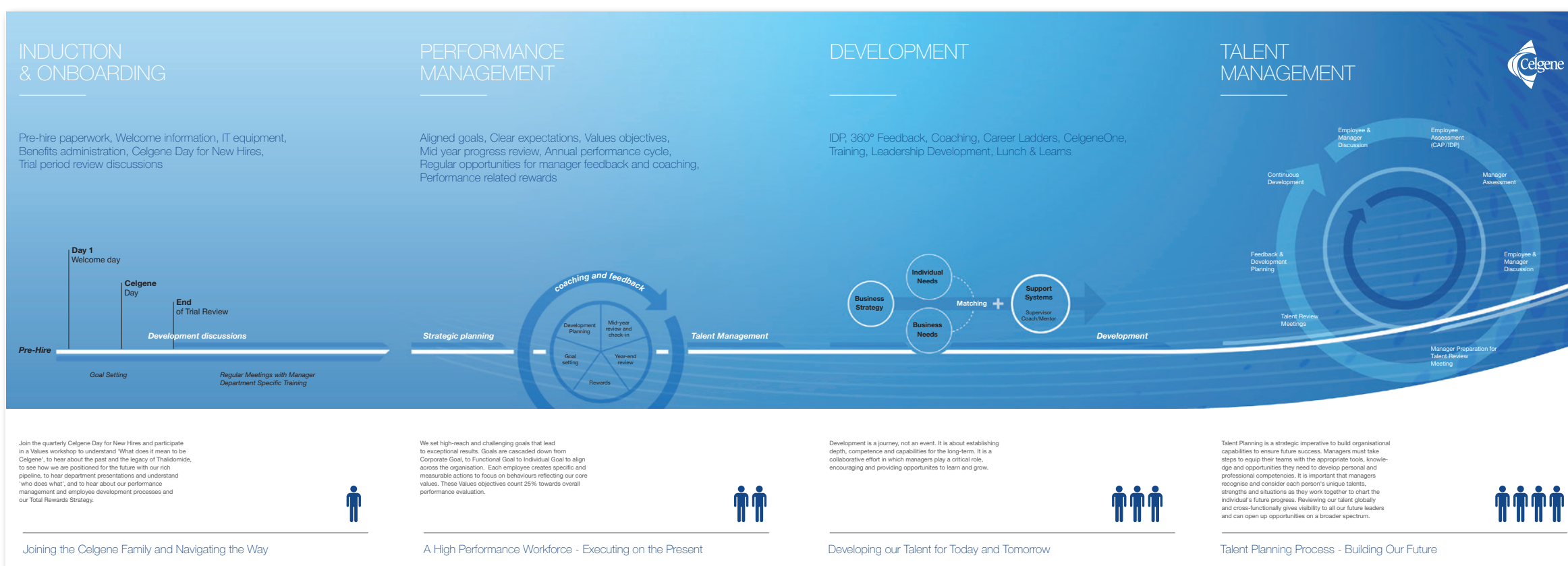
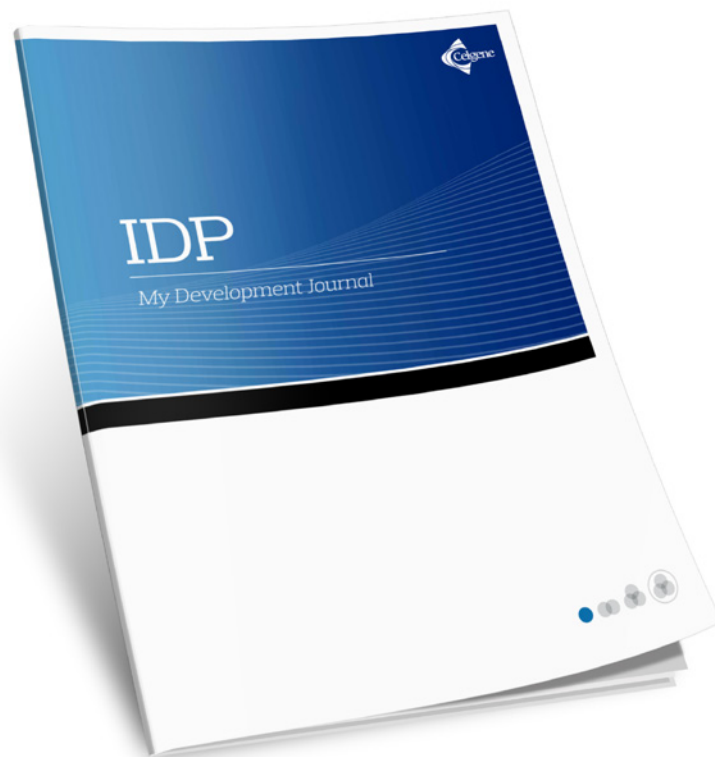
Founded in 1931, FKG Dentaire SA is today at the very cutting edge of development, production and distribution of dental products for dentists, endodontists and laboratories.

From January 2013, FKG Dentaire SA has a new visual identity. Whilst maintaining the entrepreneurial spirit and values of innovation and quality, the Management asks Inox Communication agency to make the FKG brand more visible thus supporting company growth, expansion of its product range and international development.



CELGENE

# HR COMMUNICATION TOOLS & CONTENTS





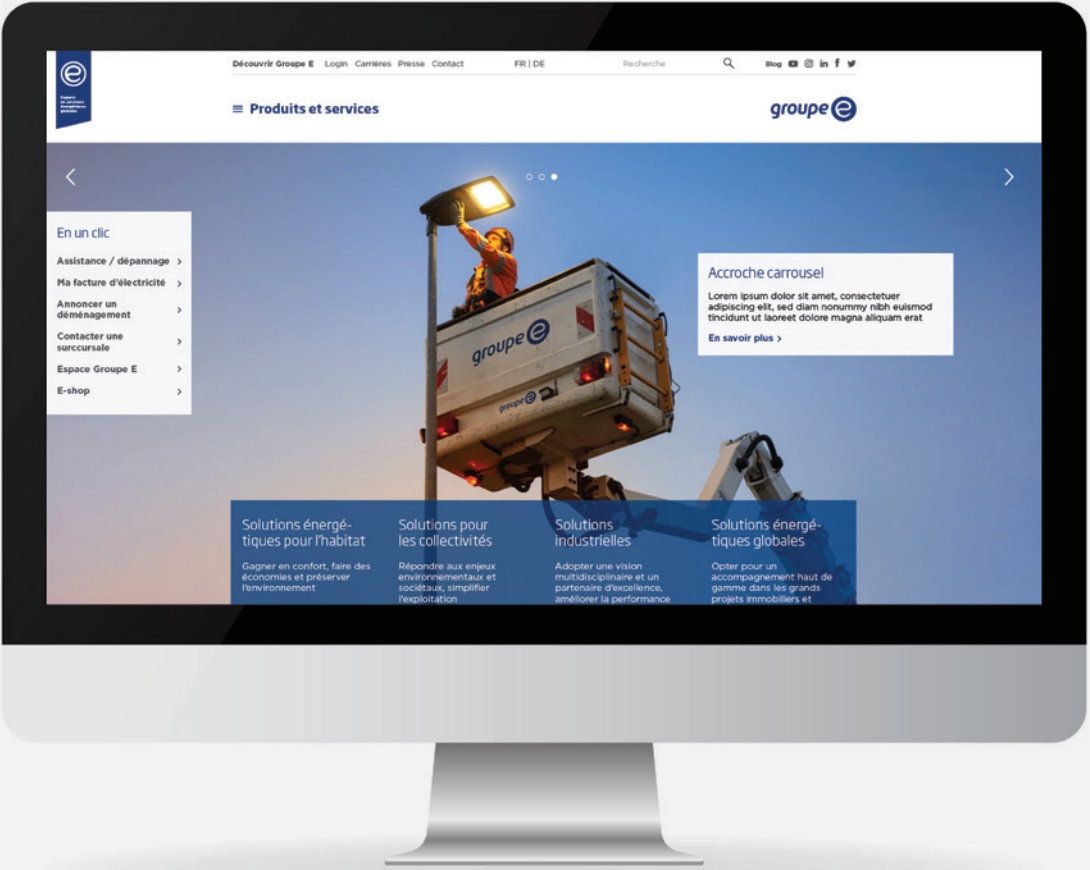
# GROUPE E VOTRE FUTUR, C'EST NOTRE PRÉSENT !

Acteur majeur de la transition énergétique en Suisse romande, Groupe E distribue historiquement l'électricité à plus de 400'000 habitants entre Fribourg, Neuchâtel, la Broye et le Pays-d'Enhaut, en plus d'une panoplie d'autres services énergétiques.

Jusqu'ici composé de plusieurs entités, avec leurs activités et leurs identités respectives, Groupe E a pris contact avec Inox Communication dans le but de retravailler son identité visuelle et de concrétiser son évolution vers une marque unique.



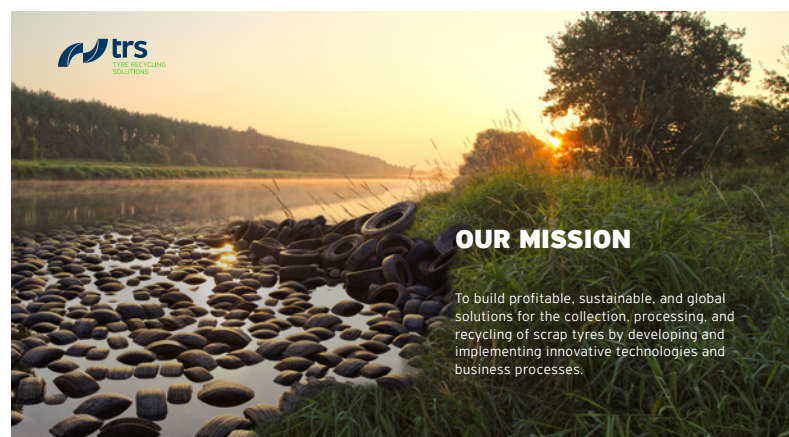
groupe e





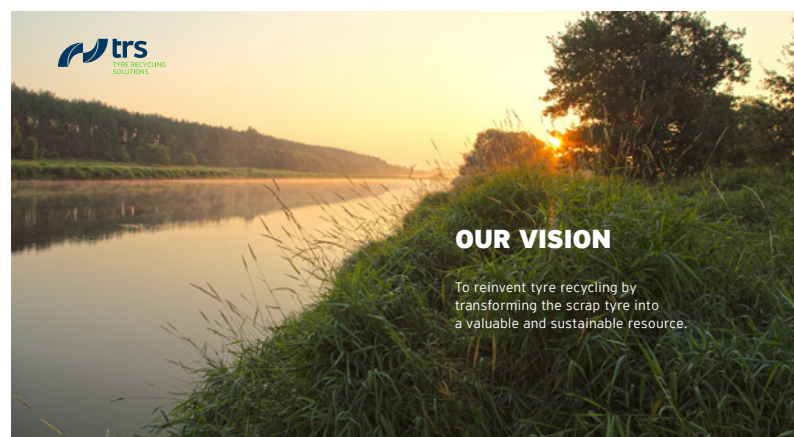


# TRS TURNING TRASH INTO CASH



## OUR MISSION

To build profitable, sustainable, and global solutions for the collection, processing, and recycling of scrap tyres by developing and implementing innovative technologies and business processes.



## OUR VISION

To reinvent tyre recycling by transforming the scrap tyre into a valuable and sustainable resource.

## trs Intelligent Compounding®

## COMPOUNDING INTO INNOVATIVE MATERIALS

TRS doesn't stop at the powder. We work with our partners and customers to use TyreXol™ powders in innovative and valuable downstream applications.



## YOUR PARTNER FOR SMART SOLUTIONS

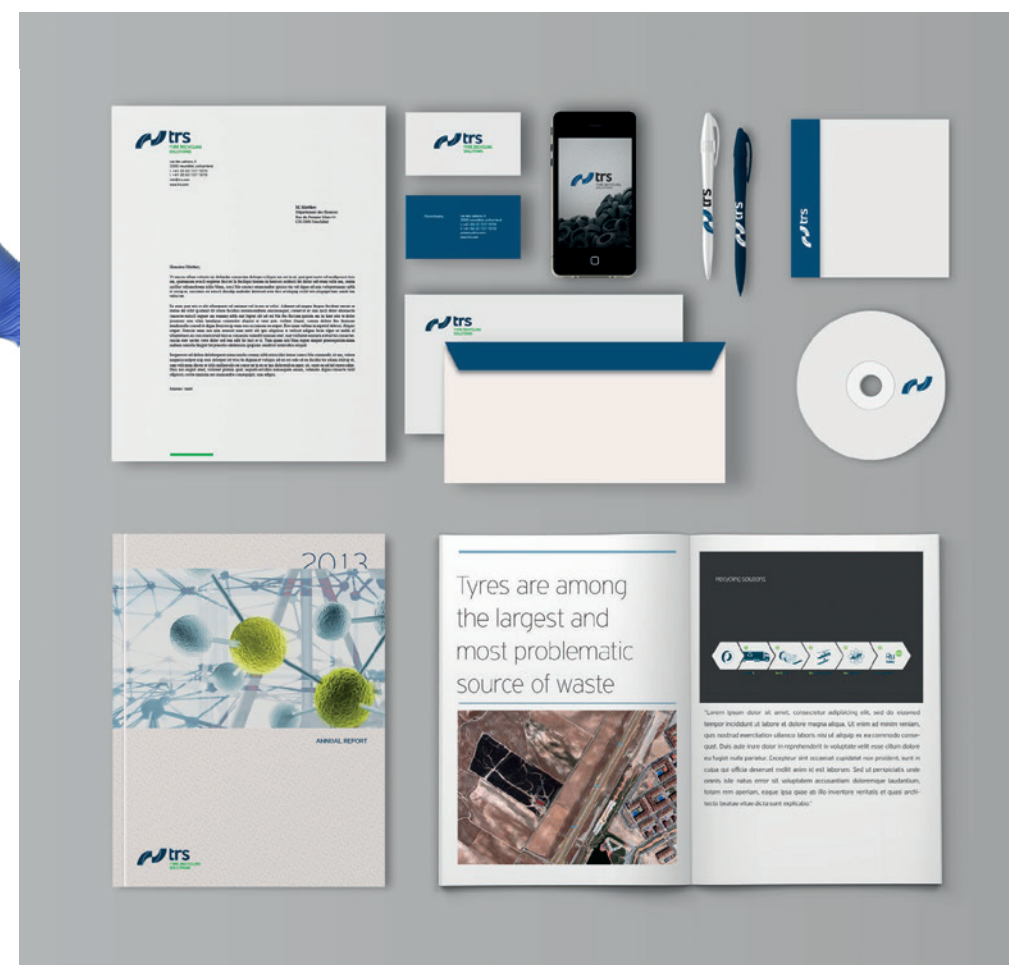
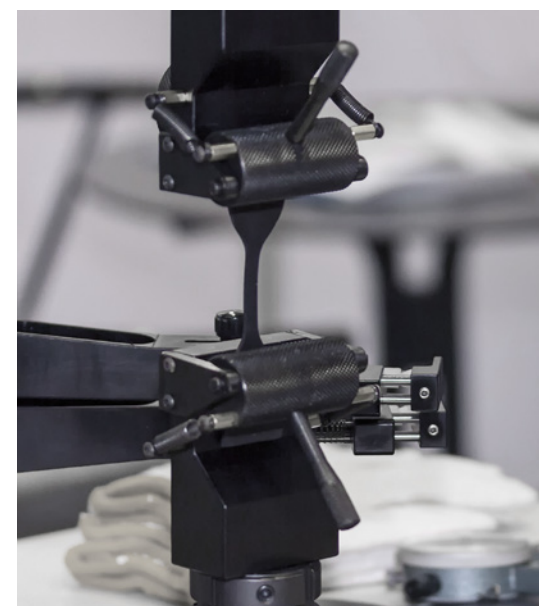
Fusing sustainability and smart solutions with optimal quality standards and high marketability, for a positive ecological footprint.



## trs Intelligent Compounding®

## HIGH STANDARD QUALITY CONTROL

Our products and production processes conform to strict standards synonymous with Swiss quality and precision around the world. We drive both quality control and assurance to meet the stringent product requirements our clients demand.





AVENTOR

# PURE RACING

BREAKTHROUGH ECONOMIC ADDED VALUE. NO PAINT,  
NO CHEMICAL TREATMENT, ZERO DIRECT EMISSIONS,  
ONLY DEGRADABLE MATERIALS,  
TOWARDS 100% RECYCLABLE



Aventor motorsport is born.  
300 kg, electrical propulsion bio  
polymer and advanced composites  
architecture

AVENTOR







www.singersa.ch



**SINGER**  
MANUFACTURE DE CADRANS SOIGNÉS

La Manufacture





**inox communication**  
business and  
brand strategy

**NEUCHÂTEL**

Bureau du 111. Pl. Numa-Droz 2  
CP 2511. CH-2001 Neuchâtel  
+41 32 727 70 70

**LAUSANNE**

Chemin Renou 2  
CH-1005 Lausanne  
+41 21 926 79 79

**www.inox.com** | f | in | @ |

PROUD FOUNDING PARTNER OF

**compáz**

[www.compaz.art](http://www.compaz.art)



[www.111.ch](http://www.111.ch)

TECHNOLOGICAL PARTNER

**Google  
Partner**